

# Introduction to Ally: Increasing Accessibility of Course Content in Canvas

Created by the Academic Commons (last updated 5/3/21)

Ally is a tool that promotes inclusion for all learners. Ally integrates with Canvas to gauge the accessibility of your content and provide guidance and tips on how to make your course files usable and accessible to *all* of your students. Ally provides feedback for instructors and automatically creates alternative formats of course resources for students.

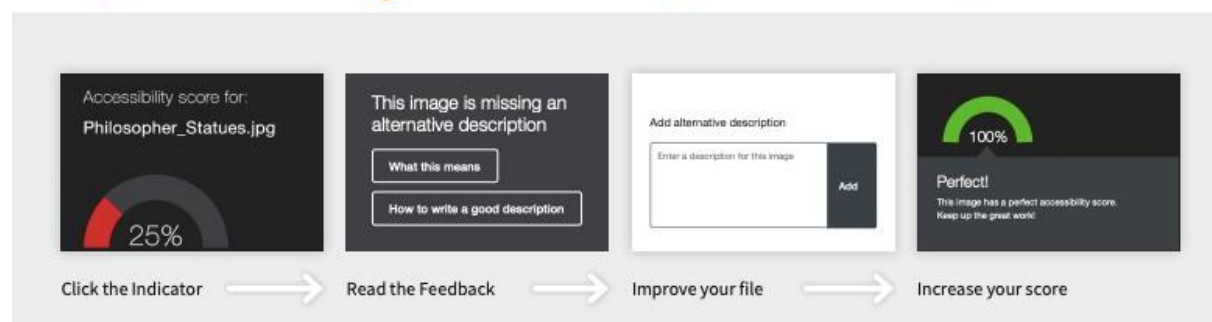
## Where do I see Ally in Canvas?

- Ally has three main components: accessibility indicators (1), alternative formats (2), and the course accessibility report (3).



## Accessibility Indicators

- Indicators are meant to raise awareness about your course content's accessibility while providing feedback about how to remove barriers to use.

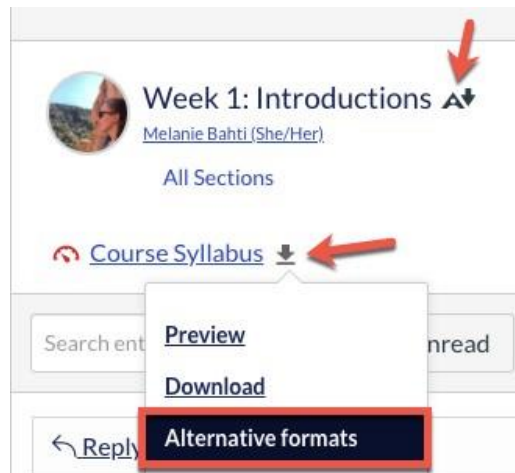


- By default, students in a Canvas course will not see the indicators - they are meant to provide feedback to the instructor.

- You can see the indicators in the Files area, or wherever you have embedded files in the Rich Content Editor.
- Clicking on the indicator will give you on-screen instructions on how to improve the accessibility score of your materials.

## Alternative Formats

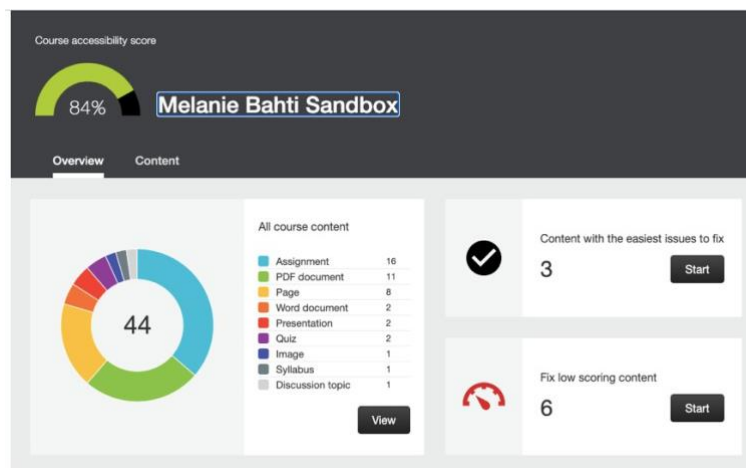
- Ally provides students with downloadable alternative formats for course files and content you create directly in Canvas, helping students engage with material in the ways that they learn best. Students can retrieve alternative formats of course files at any time, directly from Canvas.
- Next to each file in Canvas is a drop-down arrow. Choosing that drop-down gives the option to select an alternative format. Canvas-created content (e.g., the Discussion shown below) displays a clickable indicator next to the title of each resource.
  - ✓ Alternative formats include PDFs, ePub, audio, HTML, and more.



- To learn more about alternative formats, check out the [Using Ally in Canvas](#) student guide.

## Course Accessibility Report

- The Course Accessibility Report gives you a big-picture overview of the accessibility of your course. It also provides several pathways to remediate materials by prioritizing easy fixes, least accessible files, or most significant issues.
  - ✓ Access the Course Accessibility Report from the course navigation menu.



---

## Want to Learn More?

- Check out [Ally's Basics for Instructors documentation](#).
- Contact the Academic Commons to request a consult about Ally.